



PINAL COUNTY

EARLY VOTING

DANA LEWIS, RECORDER



- **Who can vote early?**
- **Why vote early?**
- **What types of early voting requests are there?**
- **How do I request an early ballot?**
- **What is a Active Early Voting List (AEVL)?**
- **When are early ballots mailed out?**
- **Can I have my ballot mailed to another address?**
- **How do I receive a replacement ballot?**
- **What happens to an early ballot after it is returned?**

Who Can Vote Early?

- **Must be registered to vote in the County 29 days before the election**
- **You do not need a reason to participate in Early Voting in Arizona**



Why Vote Early?

- **You can avoid the potential long lines at the polls**
- **You can still vote even if you will be out of town on Election Day by voting early at our voting sites or have the ballot mailed to your temporary address**
- **You have time to review all the various candidates, propositions, and referendums thoroughly in the comfort and privacy of your home**

What Types of Early Voting Requests are There?

- **Single election request**
 - Request for the current election only
- **Primary and General election request**
 - Request for the Primary and/or General at the same time via the 90-day notice
- **Active Early Voting List request**
 - Request to automatically have an early ballot mailed for every election

How Do I Request an Early Ballot?

No sooner than 93 days before and no later than 11 days before any election, you may request an early ballot by:

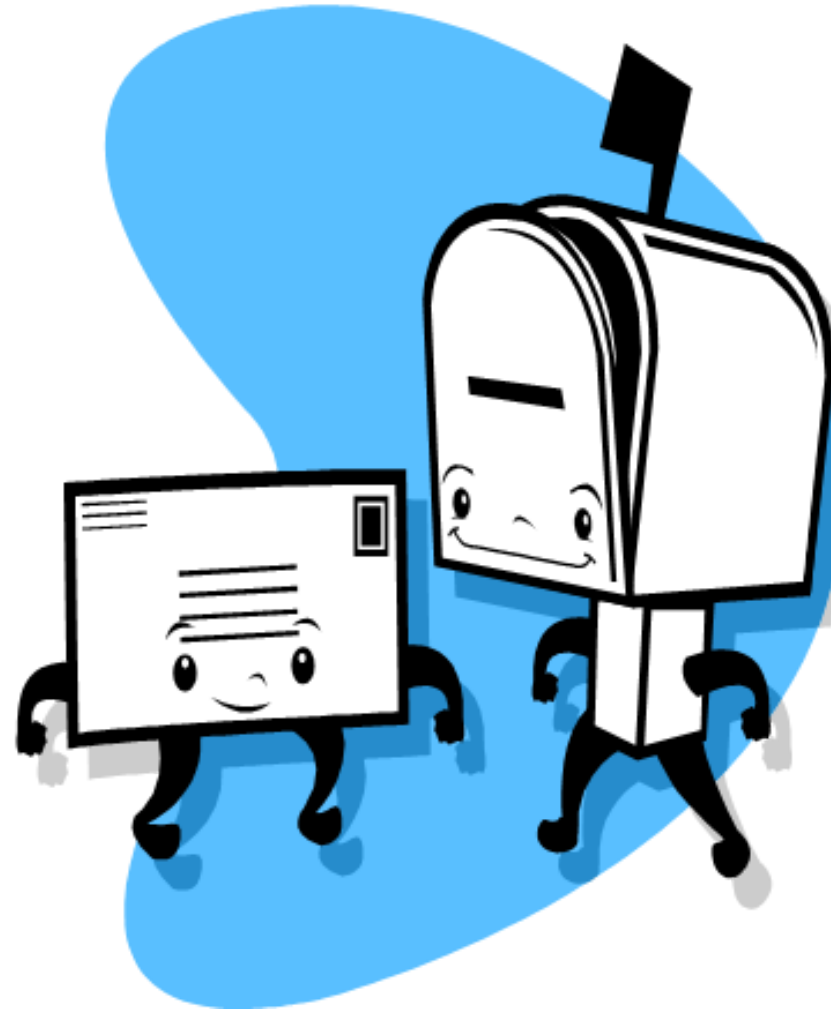
- **Phone: Call your County Recorder's Office**
- **Mail: Mail a signed request stating your name, residence address, date of birth, and where you want your ballot mailed to (if different than your residence address)**
- **Online: <https://my.arizona.vote/Early/ApplicationLogin.aspx>**
 - **Complete the online application. The link is available 90 days prior to each election date**
- **In Person: Forms available at your County Recorder's Office**

What is the Active Early Voting List (AEVL)?

- **Once you fill out a request to be on the Active Early Voting List, you will automatically be mailed an early ballot 27 days before any election in which you are eligible. There is no need to contact the Recorder's office each election to have an early ballot be mailed to you**
- **Your mailing address must be within the state**
- **In all of the above-stated instances, the early ballot must be received in the Recorder's Office prior to 7:00 P.M. on Election Day to be counted**

When are Ballots Mailed Out?

- Ballots are mailed out starting 27 days before the election. After that, ballots are usually mailed out within 48 hours upon receiving a request



Can I Have My Ballot Mailed Out to Another Address?

- **Yes, you can inform the Early Voting Department that you want your ballot mailed to your temporary address as soon as possible**
- **Remember Election Mail is NOT forwarded!**

How do I Receive a Replacement Ballot?

The following options are available when an early ballot is damaged or not received:

- **Call our office requesting another ballot stating you have spoiled the early ballot mailed to you. Another ballot will be mailed immediately, and the original ballot will be canceled**
- **Go into any of the Early Voting Site and vote early in person**



What Happens to an Early Ballot After it is Returned?

All returned ballots go through the following process:

- Returned ballots are kept in a secure area with restricted access
- Early ballot affidavit envelopes are checked to make sure they are sealed and signed by the voter
- If not signed, voters are contacted to cure their affidavit. This must be remedied no later than 7 P.M. on Election Night
- Signatures are verified by comparing the signed affidavit envelope to the signature of the voter on record in our office
- Voters with Affidavits that have Non-Matching signatures must be cured within 5 days after the election
- Early ballots are entered into the voter registration system as being returned
- Early ballots remain sealed in the affidavit envelope at all times
- Early ballots are submitted to the Elections Department for tabulation

General Information

- **When is Election Day?**
 - Election Day is Tuesday, November 8th, 2022
- **Do I need to be registered to vote in order to vote in the Election?**
 - Yes, you do. The last day to register to vote to participate in this election was October 11th, 2022
- **How can I verify if I am registered to vote?**
 - You may verify your registration online at <https://voter.azsos.gov/VoterView>
- **How can I track my ballots after I mail them or put them in a ballot dropbox?**
 - You can track your ballots at my.arizona.vote



Questions?